

BLOSSOM IN THE AIR

26TH APRIL - AMHA

Show



IMPERIAL MINIATURE HORSE CLUB

www.imhc.eu

Location: New Flandria Ranch

Ieperse Heerweg 9

8820 Torhout, Belgium

The IMHC board is proud to invite you to our AMHA approved miniature horse show :

Blossom in the Air Show AMHA Approved (2026)

This show will be AMHA approved and will proceed according to the AMHA rulebook for all classes. All participating horses must be registered with the AMHA.

Placing: 1st till 6th

There are beautiful ribbons and trophies to win thanks to our sponsors

Show date and starting time

26 April 2026

08:15

Show Location :

New Flandria Ranch

Ieperse Heerweg 9 A

8820 Torhout

Belgium

Judge

Pamela Allen, USA

Approved Judge

ShowManager

Gitte Dockx

RingSteward

Siebe Dockx

Entry closing date

5 April 2026

Late entries will not be mentioned in the catalogue and will be charged extra.

RENAULT E-TECH ELECTRIC



**tot 625 km autonomie⁽¹⁾
van 15 tot 80 % autonomie in 30 min. opladen
Google⁽²⁾ geïntegreerd & meer dan 30 apps
tot 30 geavanceerde rijhulpsystemen⁽³⁾**

0 gr CO₂/km - 14,5 - 17,3 kwh/100 km (wltp)

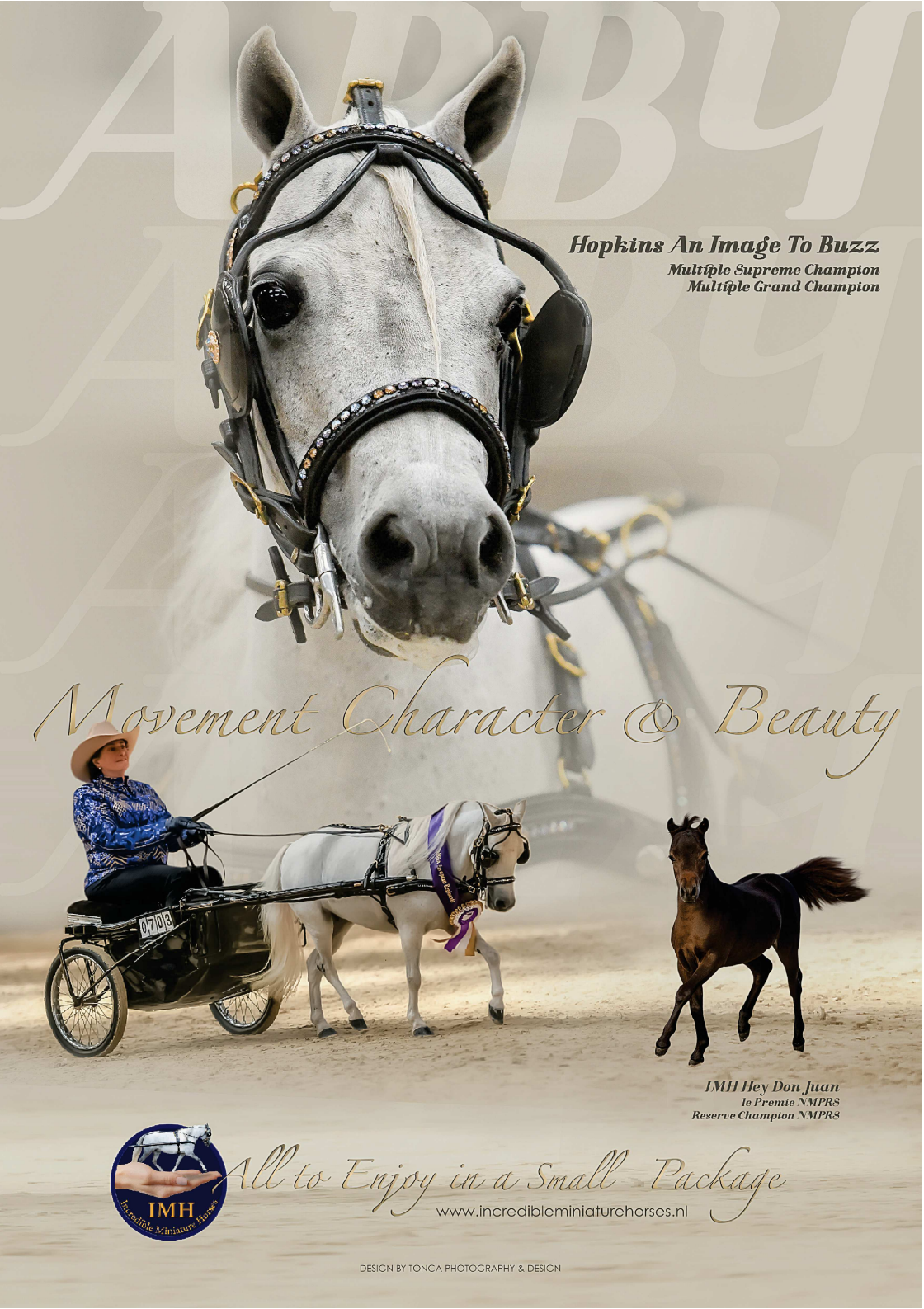
contacteer je verdeler voor alle informatie over de fiscaliteit van je wagen

(1) volgens wltp. (2) Google, Google Maps, Google Play, Waze en andere merken zijn handelsmerken van Google LLC. (3) In functie van de versie. adverteerder: Renault belgie-luxemburg n.v. (invoerder), jozef II-straat 40, 5de verd., 1000 brussel, BTW BE 0403 468 679, IBAN BE76 0017 8828 2195, rpr brussel, milieu-informatie [K.B. 19.03.2004] op www.renault.be - **GEEF VERNAAMDE AAN VERLEENDEER.**



Garage Coppenolle

Europalaan 19 – 8970 Poperinge
057/33.37.96 – info@garagecoppenolle.be



Hopkins An Image To Buzz
Multiple Supreme Champion
Multiple Grand Champion

Movement Character & Beauty



IMH Hey Don Juan
1e Premie NMPRS
Reserve Champion NMPRS



All to Enjoy in a Small Package
www.incredibleminiaturehorses.nl

Health Requirements

- Equine Influenza : All horses must have documentation, endorsed by a veterinarian, of an initial series of two intermuscular injections for primary vaccination against equine influenza given no less than 21 days and no more than 92 days apart. In addition, a booster injection must be recorded as having been given at least within every 12 months following the second shot of the initial series.
- Exhibition and transport : Owners are responsible for knowing and meeting any health requirements regarding the exhibition of horses and their transport between their home location and the show. Please check with your local veterinarian.

General

- General : The show management and her sponsors cannot be held responsible for any accidents, damages or loss of personal property or livestock.
- Conduct Animals : Cruelty, abuse or inhumane treatment of any horse in the showing, barn, stalls or on the show grounds is strictly prohibited. The use of stimulants or other drugs affecting the showing of the horse is forbidden and will lead to exclusion. Dogs must be kept under supervision of their owner at all times.
- PA System : It is the owner/handler/exhibitor's responsibility to be in time for classes. Announcements to the barn area are a management courtesy. The ring steward will use a stopwatch.
- Dress : The handlers must be correctly dressed for show ring. T-shirts, shorts, clothes with logos or monograms are not correct attire and will not be allowed in the showing.
- Smoking & drugs: The indoor arena and stabling area are strictly non-smoking areas. Drugs of any kind are not allowed anywhere on the area.
- Youth Safety : For driving and lead-line classes all youth is required to wear protective headgear (EN-1384 certification)
- Indoor Arena : No hay, shavings, flax straw or any other litter may be used in the indoor arena.

The Giovanni Boys

Watch out for them in the ring in 2026

Lorenzo

Fabrizio



idealjob

Mettre l'accent sur l'humain

Chez Idéal Job, nous mettons à profit nos valeurs pour vous garantir une qualité supérieure.

Nous offrons un parcours candidat personnalisé depuis plus de 25 ans

Vous recherchez un emploi ? Faites confiance à Idéal Job, vous bénéficierez :

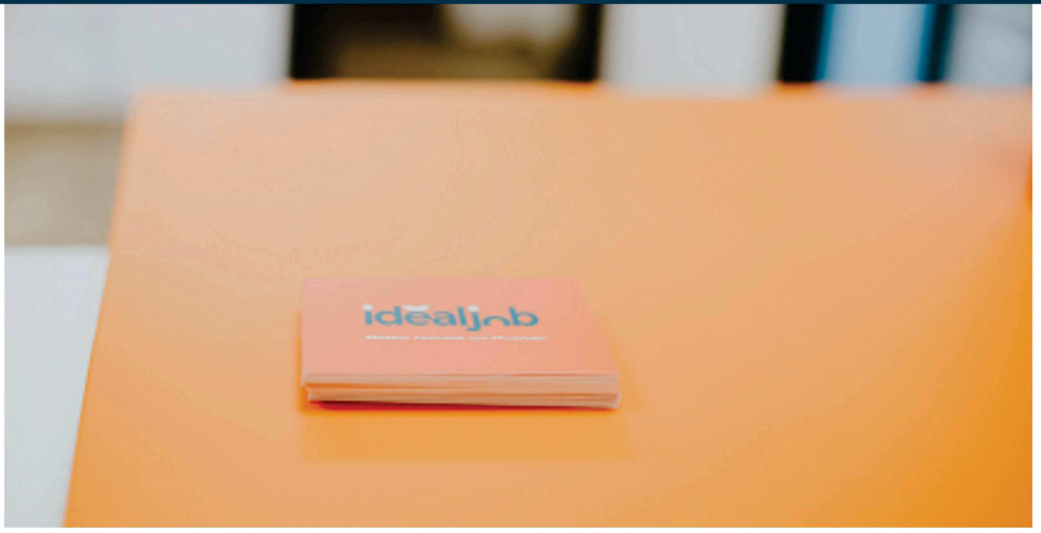
- D'un accompagnement **personnalisé** pour des missions qui vous correspondent vraiment.
- D'une relation de **confiance** entre vous et nous mais également entre vous et votre future entreprise.

Vous avez besoin des qualités de nos experts pour compléter vos équipes ?

Comblent vos besoins en recrutement, c'est notre job ! Que ce soit en **CDI**, en **CDD** ou en **intérim**, faites nous confiance. Nous vous offrirons un accompagnement sur mesure et nous nous engageons à trouver le **candidat idéal**.

Contactez nous au 03.28.49.10.10 ou par mail sur l'adresse contact@ideal-job.fr





Measuring

General : All horses must be measured before entering the showing. Exhibitors numbers will be issued after the measurement. Measuring will include Hardship Measuring.

Time : Friday April 24, 2026 : 18:00 - 20:00
Saturday April 25, 2026 : 07:15 – 7:45
Sunday April 26, 2026 : 07:15 – 07:45
***Please keep in mind to bring your horse's AMHA papers (or a color copy), it's vaccination registration papers ***

Height verifications : Weanlings cannot exceed 30 inches
Yearlings cannot exceed 32 inches
Two-year-olds cannot exceed 33 inches
3 Years of age and older cannot exceed 34 inches

Stay

Show Location : New Flandria Ranch
Ieperse Heersweg 9A
8820 Torhout
Belgium

Stables : Reservations via website.

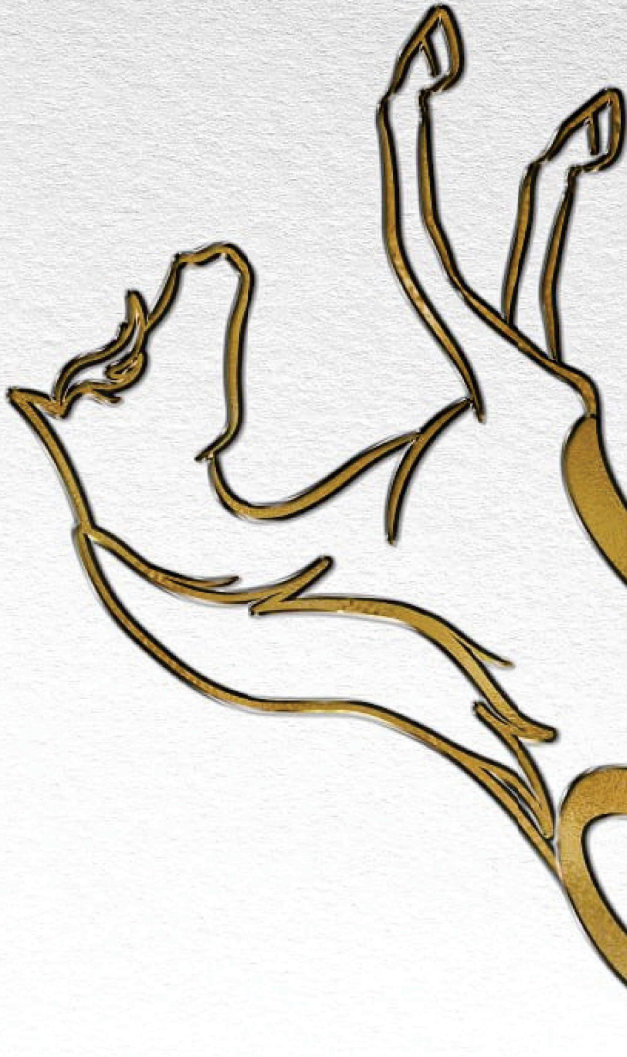
Camping : Camping is allowed at certain places at the show location.
A fee is ask to use electricity at the show location.

Hotels : There are a lot of B&B's and Hotels in the neighbourhood.

Food and Drink : There is a bar/saloon at the showground where food and drinks are available. Breakfast, dinner, snacks,...
No own food and drinks can be uses in the bar/saloon.

Entries

Deadline : Entry closes on April 5, 2026. Late entries will not be mentioned in the catalogue and will be charged extra (see "payments").



Pinbais Ham

Miniature Horses



DHOLLANDIA

DHOLLANDIA N.V.

Zoomstraat 9, IZ E17-1072

B-9160 Lokeren

België

info@dhollandia.be

www.dhollandia.com

NJMELITEEQUINES.COM
HOME TO
USA, EUROPEAN & UK
CONGRESS, WORLD & NATIONAL
CHAMPIONS AND SUPREME
AMHA- AMHR-ASPC



PRODUCING THE NEXT GENERATIONS
OF CHAMPIONS

Forms :

Entries can only be accepted when the form on the website is completely filled in. Entry forms for horses participating in a AMHA rated class are only complete with an up to date color copy of both sides of the AMHA paper. judges evaluation cards will be available in the show office and complete an a voluntary basis.

AMHA Papers:

If you intend to register or transfer a horse close to the showdate, please allow yourself enough time to receive your original registration papers returned to you to present at the show for measuring purposes.

In case of AMHA papers in request you are allowed to provide a showletter signed by the AMHA office.

Gelding status must be reflected on the horses papers or a show letter.

Membership :

Participants are not required to be a member of the IMHC or AMHA to participate at this show. All AMHA shows are open to any horses registered with AMHA whose exhibitor is able to prove valid registration and to owners who are in good standing. Any exhibitor with special needs in welcome to participate in all shows.

Amateur Youth Classes :

Official AMHA amateur or youth cards are required to participate in the AMHA Amateur or youth classes.

Exhibitors are responsible to present their amateur or youth card to the show management. Exhibitors in a non-rated Amateur or Youth class are not required to have an amateur or youth card. These exhibitors do need to qualify according to the AMHA rulebook to be eligible to enter the non-rated amateur or youth classes.

Youth and amateur card requests can be arranged at the secretary on the showgrounds. When entering you need to certify that you are an Amateur as recognized by the rules of the AMHA on the online entry form.

Senior stallions :

Owners of AMHA senior stallions (3 & older) must present a Certificate of Veterinary Inspection for cryptorchidism to show management prior to participating. Form can be found on the AMHA website.

IMHC Classes:

Only open to miniature horses without AMHA / AMHR / ASPC papers.

EU Bred, Owned and Show Classes :

These classes are open to AMHA and IMHC horses, bred, owned in Europe and shown by an European handler.

Windroses

AMERICAN MINIATURE HORSES



Windroses Miniature Horses is a small show and breeding stable of miniature horses, located in Aarsele, just on the border between East and West Flanders in Belgium. Our aim is to breed beautiful and correct horses that can be used for different purposes. They can stand their ground in halter classes, but also in the youth classes, jumping, obstacle and so on. Horses that even the smallest children can handle.



C. Cortvriendt & S. van Malderen | Belgium
0032 471 09 08 45 | sandra.vanmalderen@telenet.be

windrosesminiaturehorses.be



SOME *Dreams* ARE TOO BIG TO CARRY ALONE,
THAT'S WHY WE HAVE *Horses*



Jill Meth Poulsen
AMERICAN MINIATURE HORSES
WWW.JPMINIATURES.DK



CB. CINDEL BRUSSELAERS GRAPHICS

MINSTRELS
Fortunate's Fuoco

ALLIANCE BOLEROS FORTUNATE
ALLIANCE ESSENCE OF FIRE

SVH PATRONEN

Deluxe Elly



HOME OF MULTIPLE SUPREME CHAMPION
AMERICAN MINIATURE HORSES

WWW.VELVET-HORSES.BE

TONY DE ROO | WESTRAAT 21, B-9940 SLEIDINGE | 00329 357 32 21



Payments

Entry Fee :

- IMHC Members : € 18,00 per regular class, per horse
€ 15,00 per amateur – IMHC class, per horse
€ 14,00 per color class, per horse
€ 14,00 per liberty class, per horse
€ 0,00 per costume class, per horse
- Non IMHC members : price IMHC-member x 2
- Youth classes : € 10,00 per class, per horse
- AMHA Fee: € 2,50 per horse

Late Entry Fee :

New horses : € 50,00 extra per horse
New classes : € 5,00 extra per class
!!Late entries will not be mentioned in the show catalogue!!

Stables :

For one (1) day (including shavings) :

- IMHC members : € 85,00 per box
- Non IMHC members : € 100,00 per box

For the weekend (including shavings):

- IMHC members : € 95,00 per box
- Non IMHC members : € 110,00 per box

Showstands :

Showstands will be charged € 10,00 each and are non refundable. It's not allowed to feed hay in the showstands. Showstands need to be clean at the end of the show. If you don't have a stable, you have to keep the horses in the trailer. If that is not possible, you need to have a showstand.

Bank Information :

Imperial Miniature Horse Club vzw
IBAN : BE02 7360 5388 1140
BIC : KREDBEBB

Refunds :

Refunds will not be given without a veterinarian's written certificate stating why the horse is unable to show (illness or injury). There will be no refunds on office fees or stalls/showstands. Substitutions will be accepted without penalty.

Entries:

Entryform on website www.imhc.eu
IMHC, Karmstraat 65, 8700 Aarsele, Belgium
imhc@telenet.be



Hamilton-Smith
SHOW TEAM

*Specialising in
Training and Producing*

AMHA & AMHR

Miniature Horses

Van idee tot oplevering, wij bouwen uw visie.

Vanden Bussche Industriebouw is al meer dan 35 jaar gespecialiseerd in het bouwen en renoveren van bedrijfsgebouwen, showrooms en industriële constructies.

Wat begon als een lokaal familiebedrijf, groeide uit tot een vaste waarde in de industriebouw, met projecten verspreid over heel België. Bekijk zeker eens de projecten op onze webiste.

www.vandenbussche.be



Pssst... We zoeken nog goeie collega's



AMHA Blossom in the Air Show

| | |
|--|-------------|
| 1 BEGINNERS WITH MARE | NR |
| (open to first time and second time year exhibitor) | |
| 2 AMATEUR JR MARES, 30" AND UNDER, LEVEL 1 | 1018 |
| 3 AMATEUR JR MARES OVER 30" -33", LEVEL 1 | 1019 |
| 4 AMATEUR SR MARES, 30" AND UNDER, LEVEL 1 | 1026 |
| 5 AMATEUR SR MARES, 30"-34", LEVEL 1 | 1025 |
| 6 AOTE EXHIBITING JR MARE, LEVEL 1 | 1285 |
| 7 AOTE EXHIBITING SR MARES, LEVEL 1 | 1287 |
| 8 AMATEUR JR MARES, 30" AND UNDER, LEVEL 2 | 1016 |
| 9 AMATEUR JR MARES OVER 30" -33", LEVEL 2 | 1017 |
| 10 AMATEUR SR MARES, 30" AND UNDER, LEVEL 2 | 1023 |
| 11 AMATEUR SR MARES, 30"-34", LEVEL 2 | 1024 |
| 12 AOTE EXHIBITING JR MARE, LEVEL 2 | 1286 |
| 13 AOTE EXHIBITING SR MARES, LEVEL 2 | 1288 |
| 14 AMATEUR GRAND AND RESERVE CHAMPION MARES | 1451 |
| (1st and 2nd places from class: 2, 3, 4, 5, 6, 7, 8, 9, 10, 11, 12 and 13) | |
| 15 AMATEUR SINGLE PLEASURE DRIVING | 1224 |
| 16 YOUTH SINGLE PLEASURE DRIVING | 1218 |
| 17 OPEN SINGLE PLEASURE DRIVING | 1233 |
| 18 GRAND AND RESERVE CHAMPION SINGLE PLEASURE DRIVING | 1335 |
| (1st and 2nd of class: 15, 16 and 17) | |
| 19 YOUTH 7 YEARS AND UNDER EXHIBITING A JUNIOR MARE | 1002 |
| 20 YOUTH 8 TO 12 YEARS OF AGE EXHIBITING A JUNIOR MARE | 1003 |
| 21 YOUTH 13 TO 18 YEARS OF AGE EXHIBITING A JUNIOR MARE | 1004 |
| 22 YOUTH 7 YEARS AND UNDER EXHIBITING A SENIOR MARE | 1010 |
| 23 YOUTH 8 TO 12 YEARS OF AGE EXHIBITING A SENIOR MARE | 1011 |
| 24 YOUTH 13 TO 18 YEARS OF AGE EXHIBITING A SENIOR MARE | 1012 |
| 25 IMHC YOUTH MARES | NR |
| 26 AMATEUR STOCK-TYPE MARES | 1417 |
| 27 YOUTH STOCK-TYPE MARES | 1415 |
| 28 BEGINNERS WITH GELDING | NR |
| (open to first time and second time year exhibitor) | |
| 29 AMATEUR JR GELDING, LEVEL 1 | 1159 |
| 30 AMATEUR SR GELDING, 30" AND UNDER, LEVEL 1 | 1166 |
| 31 AMATEUR SR GELDING, OVER 30" TILL 34", LEVEL 1 | 1167 |
| 32 AOTE EXHIBITING JR GELDING, LEVEL 1 | 1303 |
| 33 AOTE EXHIBITING SR GELDING, LEVEL 1 | 1305 |
| 34 AMATEUR JR GELDING, LEVEL 2 | 1160 |
| 35 AMATEUR SR GELDING, 30" AND UNDER, LEVEL 2 | 1164 |
| 36 AMATEUR SR GELDING, OVER 30" TILL 34", LEVEL 2 | 1165 |
| 37 AOTE EXHIBITING JR GELDING, LEVEL 2 | 1304 |
| 38 AOTE EXHIBITING SR GELDING, LEVEL 2 | 1306 |



NJM ELITE 2026 STALLIONS AMHA-AMHR-ASPC



A GREAT HORSE WILL CHANGE YOUR LIFE,
THE TROULY SPECIAL ONES
DEFINE IT

WWW.ELITEEQUINES.COM

RENAULT RAFALE

FULL HYBRID E-TECH 200 HP
SELF-CHARGING



up to 1,100 km of range⁽¹⁾
up to 80% electric driving in the city⁽²⁾
solarbay® opacifying panoramic sunroof⁽³⁾
4Control advanced with four-wheel steering⁽⁴⁾

also available in **HYPER HYBRID** E-TECH 4x4 300 hp plug-in

(1) with 40% tank of petrol* for full hybrid e-tech 200 hp engine. (2) depending on the state of charge of the battery and driving style. Renault Renault you drive 2023. (3) available as an option. (4) available as an option depending on version. Fuel consumption min/max (l/100 km): 4.8/6.1 min/max (CO₂ emissions (g/km)*): 106/116. *according to wt/wt standard.

Renault recommends Castrol

renault.country




Garage Coppenolle

Europalaan 19 – 8970 Poperinge
057/33.37.96 – info@garagecoppenolle.be



Dinner

Saturday evening, 25 April, 2026



The Menu:

Stew or Vol au vent with fries and vegetables
Stoofvlees of vol au vent met frietjes en groenten

Inclusief 2 drankjes

Prijs voor volwassenen: 25 Euro

Prijs voor de kinderen tem 12 jaar: 12 euro (inclusief 1 drankje)

Op voorhand inschrijven is verplicht. imhc@telenet.be

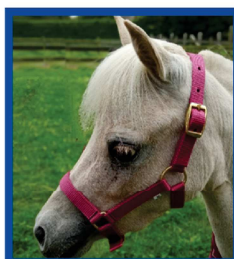


Minihorse.eu

Beste winkel voor miniatuurpaarden



Dekens, halsters en
diverse uitrusting voor
miniatuurpaarden
en shetlanders
Shapley's en Ultra
verzorgingsproducten



Elektrische afrasteringen
Andis, Double K, Heiniger
scheermachines en
scheermessen



**Windmolenstraat 64,
9450 Haaltert, België
+32 475 80 47 11
www.minihorse.eu
info@minihorse.eu**



Windroses

MINIATURE HORSES
BE

EBF SH
Volcanik

All AMHA and AMHR registered.
Treasure also ASPC registered
All standing at stud for approved mares only.

Caldwells National
Treasure

Oasis XS Perfectly
Gone Wild

Windroses Gone Wilds
Prince Aragon

Windroses Gone Wilds
Lucky Diamond

HP French
Dark Desire

HP Legend
White Walker

Applecreek Touch
The Moon

JSW Beaus
War Cry

Linm Lemmeke Design - Photos by Liz Cruber McMillan, Sandy Revard, Linm Lemmeke and Sarah Geers



WHERE CHAMPIONS ARE MADE



ALLIANCE BOLEROS INCENDIO
(HOF)
Multiple Worlds and National Grands
Get to multiple world Grand Champions
and supreme champions



DVM TROULY ITS OK TO STARE
Horse of the Year Show (HOYS)
2025 SUPREME Champion American
Miniature Horse of The Year
Multiple AMHA & AMHR
Grands and Supremes



MINSTRELS REBELS HELLS ANGEL
Horse of the Year Show (HOYS)
2025 1st Reserve Champion
Multiple AMHA & AMHR Grands
& Reserve Grands

THE MINSTRELS PROGRAM

At Minstrels Miniature Horses we breed refined, correct, modern Arabian-type American Miniature Horses with exceptional presence, balance, and show ring charisma

- Elite Bloodlines
- Professional Training Program
- Full Show PRODUCTION

We also offer professional training for outside horses,
preparing them for success in the show ring.



STALLIONS AVAILABLE AT STUD FOR SELECTED MARES

www.minstrelsmminiatures.com

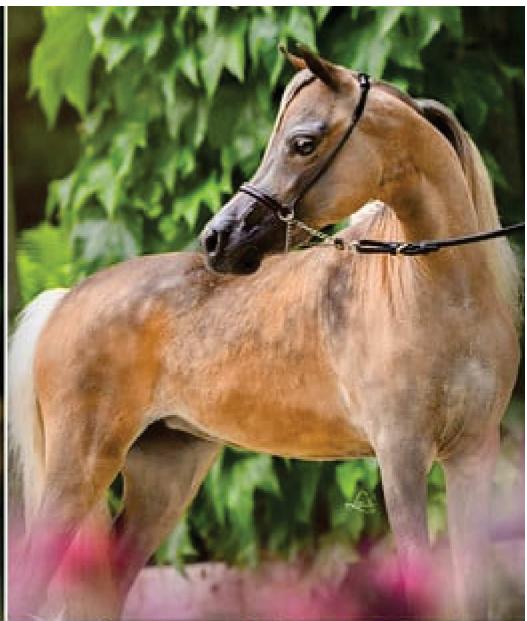


| | |
|---|-------------|
| 39 AMATEUR GRAND AND RESERVE CHAMPION GELDINGS | 1450 |
| (1st and 2nd place from class: 29, 30, 31, 32, 33, 34, 35, 36, 37 and 38) | |
| 40 AMATEUR STOCK-TYPE GELDINGS | 1419 |
| 41 YOUTH STOCK-TYPE GELDINGS | 1416 |
| 42 YOUTH COOL WITH A MARE OR GELDING | 1256 |
| 43 ADULT COOL WITH A MARE OR GELDING | 1257 |
| 44 YOUTH SHOWMANSHIP 7 AND UNDER | 1121 |
| 45 YOUTH SHOWMANSHIP 8 TO 12 YEARS | 1122 |
| 46 YOUTH SHOWMANSHIP 13 TO 18 YEARS | 1123 |
| 47 AMATEUR SHOWMANSHIP | 1125 |
| 48 ADULT SHOWMANSHIP | 1126 |
| 49 IMHC SHOWMANSHIP | |
| 50 AOTE COUNTRY PLEASURE DRIVING | 1314 |
| 51 AMATEUR COUNTRY PLEASURE DRIVING | 1273 |
| 52 YOUTH COUNTRY PLEASURE DRIVING | 1275 |
| 53 OPEN COUNTRY PLEASURE DRIVING | 1247 |
| 54 GRAND AND RESERVE CHAMPION COUNTRY PLEASURE DRIVING | 1334 |
| (1st and 2nd of class: 50, 51, 52 and 53) | |
| 55 YOUTH HUNTER 12 YEARS OF AGE AND UNDER | 1184 |
| 56 YOUTH HUNTER 13 TILL 18 YEARS OF AGE | 1185 |
| 57 IMHC YOUTH HUNTER | NR |
| 58 AMATEUR HUNTER | 1186 |
| 59 HUNTER | 1188 |
| 60 IMHC HUNTER | NR |
| 61 YOUTH JUMPER 12 YEARS OF AGE AND UNDER | 1190 |
| 62 YOUTH JUMPER 13 YEARS OF AGE AND OLDER | 1191 |
| 63 IMHC YOUTH JUMPER | NR |
| 64 AMATEUR JUMPER | 1192 |
| 65 OPEN JUMPER | 1194 |
| 66 IMHC JUMPER | NR |
| 67 JUMP OF JUMPS | NR |
| 68 BEGINNERS WITH STALLION | NR |
| (open to first time and second time year exhibitor) | |
| 69 AMATEUR JR STALLIONS, 30" AND UNDER, LEVEL 1 | 1063 |
| 70 AMATEUR JR STALLIONS, OVER 30" TILL 33", LEVEL 1 | 1062 |
| 71 AMATEUR SR STALLIONS, 30" AN UNDER, LEVEL 1 | 1069 |
| 72 AMATEUR SR STALLIONS, OVER 30" TILL 34", LEVEL 1 | 1070 |
| 73 AOTE EXHIBITING JR STALLION, LEVEL 1 | 1294 |
| 74 AOTE EXHIBITING SR STALLION, LEVEL 1 | 1296 |
| 75 AMATEUR JR STALLIONS, 30" AND UNDER, LEVEL 2 | 1060 |
| 76 AMATEUR JR STALLIONS, OVER 30" TILL 33", LEVEL 2 | 1061 |
| 77 AMATEUR SR STALLIONS, 30" AN UNDER, LEVEL 2 | 1067 |
| 78 AMATEUR SR STALLIONS, OVER 30" TILL 34", LEVEL 2 | 1068 |
| 79 AOTE EXHIBITING JR STALLION, LEVEL 2 | 1295 |

Ciridel
PROFESSIONAL DESIGN



WWW.STALLHALLEBERG.NL



Showphotographer
Linn Lemmeke

Official showphotographer for IMHC 2026.
Contact me if you're interested in pictures
from the show or want to have a photoshoot
before or after the show.



Linn Lemmeke at Facebook
LinnWLemmeke@gmail.com
Pictures at:

www.LinnLemmeke.smugmug.com/Horseshows



GS MINI



STABLES

HOME OF LITTLE FRIENDS

| | |
|---|-------------|
| 80 AOTE EXHIBITING SR STALLION, LEVEL 2 | 1297 |
| 81 AMATEUR GRAND AND RESERVE CHAMPION STALLION | 1452 |
| (1st and 2nd of class: 69, 70, 71, 72, 73, 74, 75, 76, 77, 78, 79 and 80) | |
| 82 AMATEUR STOCK-TYPE STALLIONS | 1418 |
| 83 GROUP COSTUME | 1323 |
| 84 LIBERTY | 1196 |
| 85 IMHC LIBERTY | NR |
| 86 WEANLING MARES - 30" AND UNDER | 1033 |
| 87 YEARLING MARES - 28"AND UNDER | 1041 |
| 88 YEARLING MARES - OVER 28" - 30" | 1043 |
| 89 YEARLING MARES - OVER 30" - 32" | 1044 |
| 90 TWO YEAR OLD MARES - 29" AND UNDER | 1050 |
| 91 TWO YEAR OLD MARES - 29" TO 31" | 1051 |
| 92 TWO YEAR OLD MARES - 31" TO 33" | 1052 |
| 93 GRAND AND RESERVE CHAMPION JUNIOR MARE | 1453 |
| (1st and 2nd of class: 86, 87, 88, 89, 90, 91 and 92) | |
| 94 EU BRED, OWNED AND SHOWN JUNIOR MARES | NR |
| 95 IMHC JUNIOR MARE | NR |
| 96 WEANLING GELDINGS - 30" AND UNDER | 1114 |
| 97 YEARLING GELDINGS - 32" AND UNDER | 1115 |
| 98 TWO YEAR OLD GELDINGS - 33" AND UNDER | 1116 |
| 99 GRAND AND RESERVE CHAMPION JUNIOR GELDING | 1455 |
| (1st and 2nd of class: 96, 97 and 98) | |
| 100 SENIOR GELDINGS - 30" AND UNDER | 1119 |
| 101 SENIOR GELDINGS - OVER 30" TO 32" | 1120 |
| 102 SENIOR GELDINGS - OVER 32" TO 34" | 1118 |
| 103 GRAND AND RESERVE CHAMPION SENIOR GELDING | 1117 |
| (1st and 2nd of class: 100, 101 and 102) | |
| 104 OPEN STOCK-TYPE GELDINGS | 1422 |
| 105 EU BRED, OWNED AND SHOWN JUNIOR AND SENIOR GELDINGS | NR |
| 106 GRAND AND RESERVE CHAMPION EU BRED GELDINGS | NR |
| (1st and 2nd of class: 105) | |
| 107 IMHC JUNIOR GELDING | NR |
| 108 IMHC SENIOR GELDING | NR |
| 109 IMHC GRAND CHAMPION GELDING | NR |
| (1st and 2nd of class: 107 and 108) | |
| 110 YOUTH 7 YEARS OF AGE AND UNDER EXHIBITING GELDING | 1107 |
| 111 YOUTH 8 TO 12 YEARS OF AGE EXHIBITING GELDING | 1108 |

HILLARPSGÅRDENS

Miniatures



D&S T.J I'M A
Country Boy

HOME OF WORLD AND SUPREME CHAMPIONS
STALLIONS AT STUD



Mi Shelby



TLF Monaco



Windroses Volcaniks Rocky Diamond



SH Inspiration



“International Friends of AMHA”

Facebook page

The place to look for international
information online!

KURK



PARKET



VINYL



LAMINAAT



KURK EN PARKET
HOOREWEGE

MEER DAN 1.000 SOORTEN
DUURZAME VLOEREN

ONTDEK ZE IN ONZE TOONZAAL
LOSTRAAT 17, 9880 AALTER

+32 478 26 63 08

HOOREWEGE.BE

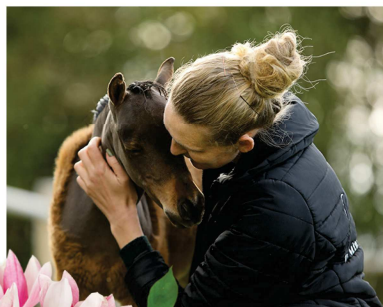
| | |
|--|-------------|
| 112 YOUTH 13 TOT 18 YEARS OF AGE EXHIBITING GELDING | 1109 |
| 113 IMHC YOUTH HALTER GELDING | |
| 114 AMATEUR ROADSTER | 1209 |
| 115 OPEN ROADSTER | 1215 |
| 116 GRAND AND RESERVE CHAMPION ROADSTER | 1333 |
| (1st and 2nd of class: 114 and 115) | |
| 117 WEANLING STALLIONS - 30" AND UNDER | 1074 |
| 118 YEARLING STALLIONS - 28" AND UNDER | 1082 |
| 119 YEARLING STALLIONS - 28" TO 30" | 1084 |
| 120 YEARLING STALLIONS - 30" TO 32" | 1085 |
| 121 TWO YEAR OLD STALLIONS - 29" AND UNDER | 1091 |
| 122 TWO YEAR OLD STALLIONS - OVER 29" TOT 31" | 1092 |
| 123 TWO YEAR OLD STALLIONS - OVER 31" TO 33 | 1093 |
| 124 GRAND AND RESERVE CHAMPION JUNIOR STALLION | 1457 |
| (1st and 2nd of class: 117, 118, 119, 120, 121, 122 and 123) | |
| 125 EU BRED, OWNED AND SHOWN JUNIOR STALLIONS | NR |
| 126 IMHC JUNIOR STALLION | NR |
| 127 YOUTH HALTER OBSTACLE 12 YEARS OF AGE AND UNDER | 1154 |
| 128 YOUTH HALTER OBSTACLE 13 YEARS OF AGE AND OLDER | 1157 |
| 129 IMHC YOUTH HALTER OBSTACLE | NR |
| 130 AMATEUR HALTER OBSTACLE | 1180 |
| 131 HALTER OBSTACLE | 1182 |
| 132 IMHC HALTER OBSTACLE | NR |
| 133 VERSATILITY | 1331 |
| 134 AMATEUR CLASSIC PLEASURE DRIVING | 1361 |
| 135 YOUTH CLASSIC PLEASURE DRIVING | 1367 |
| 136 OPEN CLASSIC PLEASURE DRIVING | 1364 |
| 137 GRAND AND RESERVE CHAMPION CLASSIC PLEASURE DRIVING | 1336 |
| (1st and 2nd of class: 134, 135 and 136) | |
| 138 IMHC CLASSIC PLEASURE DRIVING | NR |
| 139 SENIOR MARES - 28" AND UNDER | 1056 |
| 140 SENIOR MARES - OVER 28" TO AND INCLUDING 30" | 1055 |
| 141 SENIOR MARES - OVER 30" TO AND INCLUDING 32" | 1054 |
| 142 SENIOR MARES - OVER 32" TO AND INCLUDING 34" | 1053 |
| 143 GRAND AND RESERVE CHAMPION SENIOR MARE | 1454 |
| (1st and 2nd of class: 139, 140, 141 and 142) | |
| 144 OPEN STOCK TYPE MARES | 1420 |
| 145 EU BRED, OWNED AND SHOWN SENOR MARES | NR |
| 146 GRAND AND RESERVE CHAMPION EU BRED MARES | NR |
| (1st and 2nd of class: 94 and 145) | |

SPRIET

Gardenconcept

Grondwerken | Afbraakwerken | Transport | Containerverhuur

JP Miniatures



JP Miniatures is located in Denmark and home of supreme and grand champions. Our passion is to show and breed refined, easy going and great moving American Miniature horses.

For more than 10 years we have loved the small horses and all the friends we meet on our journey. Our goal is to give each horse the best possibilities to shine but most importantly - we want to have fun!



Jill Poulsen
5750 Ringe, Denmark

www.jpminiatures.dk

| | | |
|-----|---|-------------|
| 147 | IMHC SENIOR MARES | NR |
| 148 | IMHC GRAND CHAMPION MARES (1st and 2nd of class: 95 and 147) | NR |
| 149 | SENIOR STALLIONS - 28" AND UNDER | 1097 |
| 150 | SENIOR STALLIONS - OVER 28" UP TO AND INCLUDING 30" | 1096 |
| 151 | SENIOR STALLIONS - OVER 30" UP TO AND INCLUDING 32" | 1095 |
| 152 | SENIOR STALLIONS - OVER 32" UP TO AND INCLUDING 34" | 1094 |
| 153 | GRAND AND RESERVE CHAMPION SENIOR STALLION (1st and 2nd of class: 149, 150, 151 and 152) | 1458 |
| 154 | OPEN STOCK-TYPE STALLIONS | 1421 |
| 155 | EU BRED, OWNED AND SHOWN SENIOR STALLION | NR |
| 156 | GRAND AND RESERVE CHAMPION EU BRED STALLION (1st and 2nd of class: 125 and 155) | NR |
| 157 | IMHC SENIOR STALLION | NR |
| 158 | IMHC GRAND CHAMPION STALLION (1st and 2nd of class: 126 and 157) | NR |
| 159 | MULTI COLOR STALLIONS AND GELDING | 1131 |
| 160 | SOLID COLOR STALLONS AND GELDINGS | 1132 |
| 161 | MULTI COLOR MARES | 1129 |
| 162 | SOLID COLOR MARES | 1130 |
| 163 | IMHC MULTI COLOR HORSE | NR |
| 164 | IMHC SOLID COLOR HORSE | NR |
| 165 | AMATEUR - YOUTH GRAND CHAMPION AND RESERVE STOCK (1st and 2nd of class: 26, 27, 40, 41 and 82) | NR |
| 166 | GRAND CHAMPION AND RESERVE STOCK-TYPE (1st and 2nd of class: 104, 144 and 154) | 1462 |
| 167 | YOUTH SUPREME CHAMPION & RESEVE (CHOICE OF THE HEART) | NR |
| 168 | PERFORMANCE SUPREME CHAMPION (CHOICE OF THE HEART) | NR |
| 169 | IMHC & EU BRED SUPREME CHAMPION & RESERVE (1st of class: 106, 109, 146, 148, 156 and 158) | NR |
| 170 | AMATEUR SUPREME CHAMPION & RESERVE (1st of class: 14, 39 and 81) | NR |
| 171 | AMHA STOCK SUPREME CHAMPION & RESERVE (1st of class: 165 and 166) | NR |
| 172 | AMHA SUPREME CHAMPION & RESERVE (1st of class: 93, 99, 103, 124, 143 and 153) | 1352 |



**Wij bouwen
uw visie.**

www.vandenbussche.be

 **Veurne**
Vanden Bussche